

Blue Water BREB GmbH

Office Address:

Kapitän-Alexander-Straße 16
27472 Cuxhaven, Germany
Mail: management@bw-breb.de

Agency Sassnitz:

Hafeneingangsgebäude Sassnitz
Fährhafen 20b
18546 Sassnitz, Germany
Mail: sassnitz@breb.de

Terminal:

An der Baumrönne 1 (DOIZ)
27472 Cuxhaven, Germany

Phone: +49 (0) 4721 674 99 83
Fax: +49 (0) 4721 590 54-99
Mail: info@bwbreb.de

www.bluewaterbreb.de



OUR TEAM



We offer Technical Equipment such as ...

- Reachstacker Konecrane 100to lifting capacity with hock
- Reachstacker Konecrane 85to lifting capacity with hock
- Reachstacker Konecrane 65 to lifting capacity with hock
- Reachstacker Konecrane 45 to lifting capacity with container spreader
- Forklifts: 16to, 12to, 10to, 7,5to, 5to, 3,5to
- Goldhofer telescope trailer 'Windcarrier' SPZ-P3, max. telescope length 62,5m
- LHM 600 mobile portcrane 208to
- harbour portal crane 500to
- Terberg tugmaster, 35to gooseneck load
- terminal roll-trailer 80-125 to
- MAN truck, 13,6m trailer & 13,6m open flat trailer

Work Qualifications...

- Naval Architects, Port Captains, QHSE experts



HISTORY

November 2016

Blue Water Shipping Esbjerg and BREB Cuxhaven established Blue Water BREB to jointly serve all On-/Offshore Wind, Oil- and Gas-Clients in Germany.

Blue Water's international experience combined with BREB's local knowledge guarantees you a strong and reliable partner who can handle all of your requirements.

February 2017

Blue Water BREB starts its Terminal activities in Cuxhaven.

A long- term cooperation is agreed with VESTAS. The agreement includes stevedoring, terminal handling, storage and loading of trucks.

We are located directly in the hotspots of German Offshore Wind Industry in Cuxhaven and Sassnitz. Consequently, we have long experience as Port Agency in Bremen, Bremerhaven, Cuxhaven, Sassnitz and Stade.

Directly next to the new Siemens Gamesa Renewable Energy factory for nacelles in Cuxhaven, we are logistics partner to SGRE and their suppliers.

We serve project clients all along the German North and Baltic coastline with custom-tailored solutions for any standard or out of gauge cargo handling.

Certifications



001

Our services and processes are approved and certified under Lloyd's Register according to

- ISO 9001: Quality Management System
- ISO 14001: Environmental Management System
- ISO 45001:2018: Occupational Health and Safety

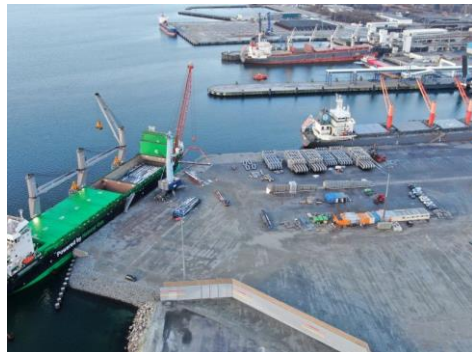
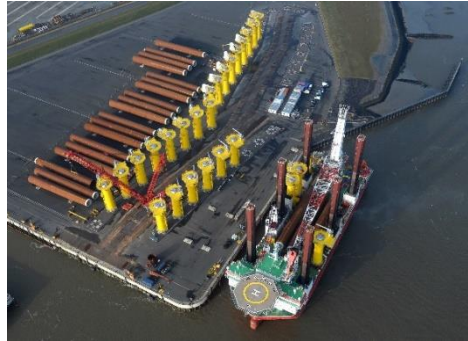
PORT AGENCY

Blue Water BREB offers Port Agency in all German ports, with offices in Cuxhaven and Mukran, and Antwerp-Zeebrugge-range to Shipping-Lines, Charterers and Owners as well as for Offshore projects.

- 24/7 service to crew and ship owners for all vessel types
- Worldwide solutions in port agency, chartering and stevedoring
- Offshore base facilities, warehousing – including customs clearance
- In-house Naval Architects, Port Captains, QHSE experts and other specialists

Contact in Mukran: sassnitz@breb.de

Contact in Cuxhaven: agency@breb.de



OUR PORTFOLIO

We are registered in Cuxhaven and handle thousands of On- and Offshore components per year as terminal operator. Our services include...

- Complete transport and logistics solutions worldwide
- Turbines, foundations and other components
- Handling and monitoring from factory to site
- Re-supply to worldwide rigs, offshore and onshore installations and supply bases
- Management of capital projects
- Specialized services
- In-house engineering, QHSE, IT and other specialist departments
- Integrated logistics solutions and tailor made IT systems
- Warehousing, customs formalities and other value added services

Blue Water BREB also offers all services of their mother companies Blue Water Shipping Esbjerg and BREB GmbH & Co. KG Cuxhaven, such as...

- Global transport,
- Shipping & freight forwarding,
- Cruise & maritime logistics,
- Reefer logistics or tailor-made IT systems

with more than 90 offices worldwide.

Contact: operations@bwbreb.de



OUR TERMINAL AT THE GERMAN OFFSHORE INDUSTRY CENTRE CUXHAVEN (DOIZ)

Perfect accessibility and fast transport links to the European hinterland via vessel, train, truck, or plane.

